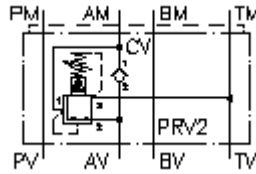


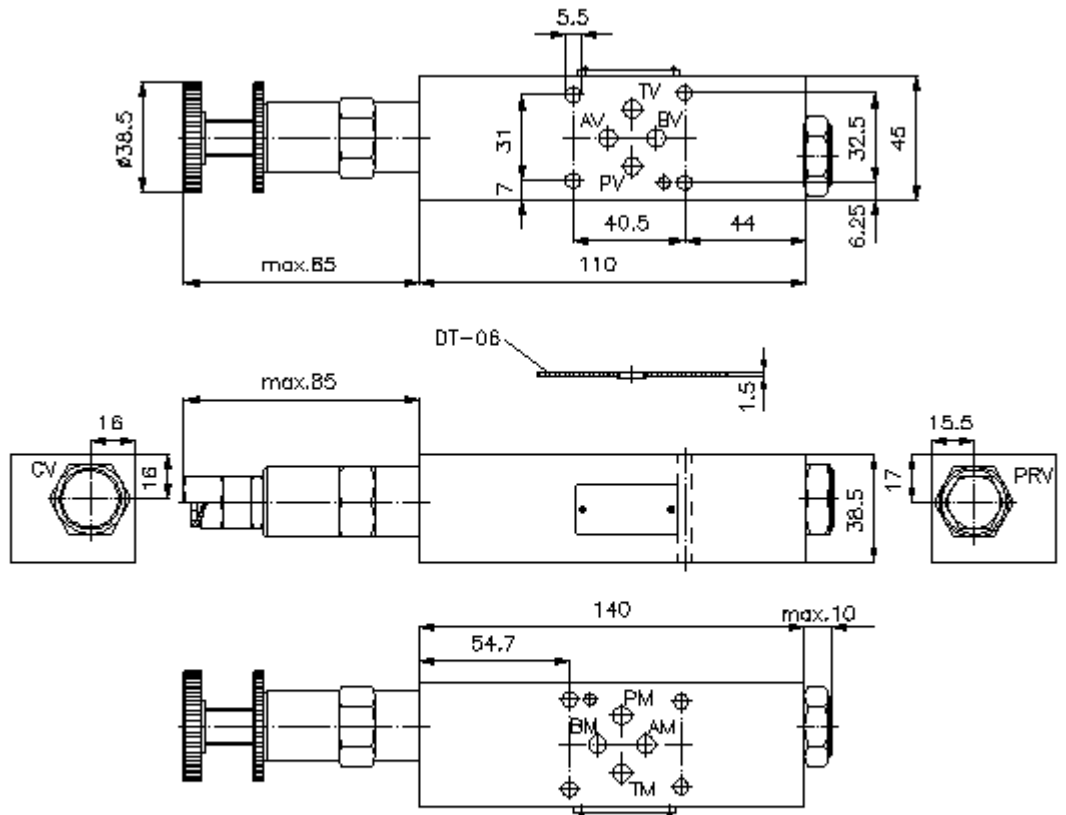
**3 way press. reg. valve CETOP 3
(sandwich plate) in A,pilot operat.
DMVZ-06.-A02./..**



IMAV-Hydraulik GmbH
Breite Strasse 10
40670 Meerbusch - Germany
fon +49 (0)2159 - 9188.0
fax +49 (0)2159 - 4242
e-mail: info@imav.com
internet: <http://www.imav.com>

IZ-430-204-00

(Subject to change!)



**3 way press. reg. valve CETOP 3
(sandwich plate) in A,pilot operat.
DMVZ-06.-A02./..**



IMAV-Hydraulik GmbH
Breite Strasse 10
40670 Meerbusch - Germany
fon +49 (0)2159 - 9188.0
fax +49 (0)2159 - 4242
e-mail: info@imav.com
internet: <http://www.imav.com>

IZ-430-204-00

(Subject to change!)

Ordering example:

DMVZ - 06S - A 02 C / 12
| | | | | |
A B C D E F

Model code:

- A design**
pressure regulaton valve
with mounting interface DIN 24340 form A
sandwichplate design
- B size and material**
06S = steel (9SMnPb28K resp. GGG-40)
- C function mode**
A = in A acting
- D pressure reducing valve**
01 = PRV1-10.-.. (direct acting) see data
sheet no.: [MP-210-100-00](#)
02 = PRV2-10.-.. (pilot operated) see data
sheet no.: [MP-210-101-00](#)
- E adjustment**
C = cap
K = handknob

- F pressure range**
pressure range (PRV1)
02 = 3.5 - 14 bar
06 = 7.0 - 40 bar
12 = 14.0 - 85 bar
24 = 30.0 - 165 bar
pressure range (PRV2)
03 = 3.5 - 20 bar
20 = 7.0 - 140 bar
35 = 17.0 - 240 bar

Technical Data:

- nominal pressure:** 250 bar (A)
350 bar (S)
- nominal flow:** 40 l/min
- weight:** 0.8 / 1.9 kg (A/S)
- included:** DT-06 = sealing plate with vulcanized O-ring (Viton FPM)